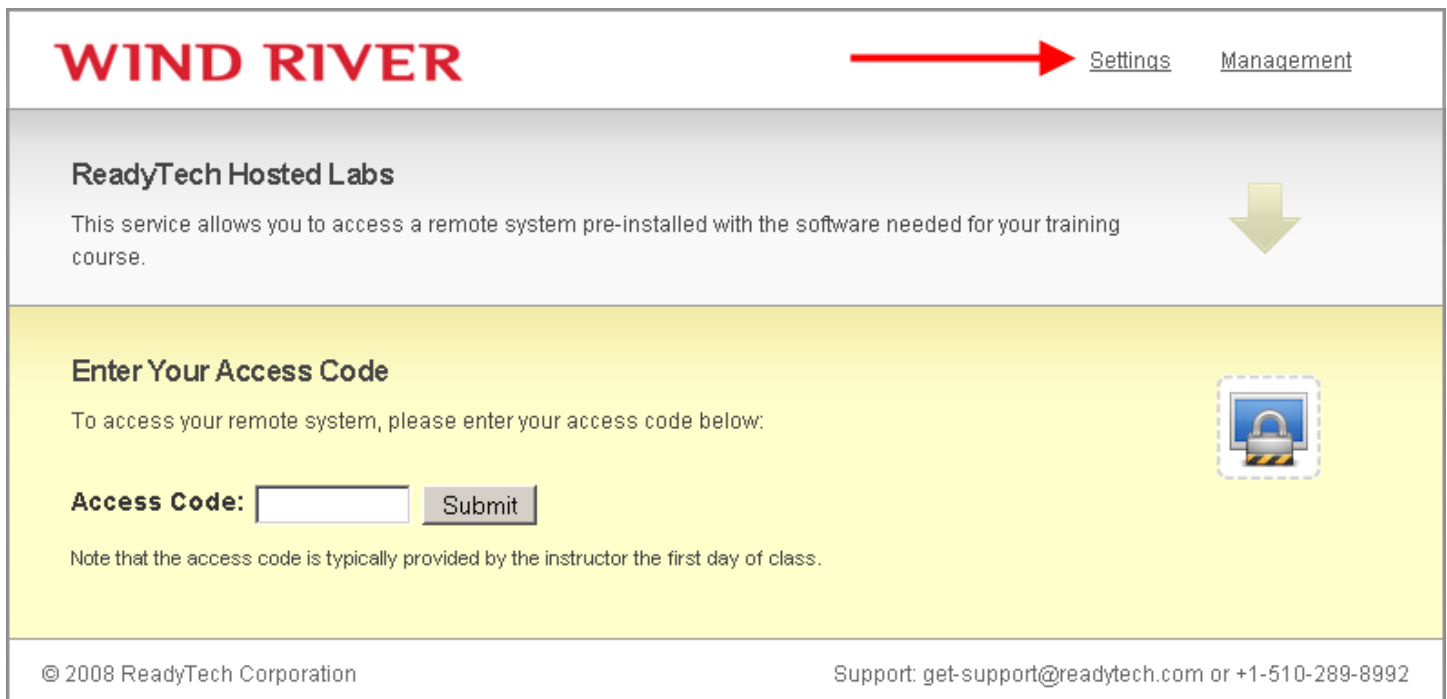


1. Within your browser, connect to <http://windriver.hostedtraining.com> and click on 'Settings'



WIND RIVER [Settings](#) [Management](#)

ReadyTech Hosted Labs

This service allows you to access a remote system pre-installed with the software needed for your training course.

Enter Your Access Code

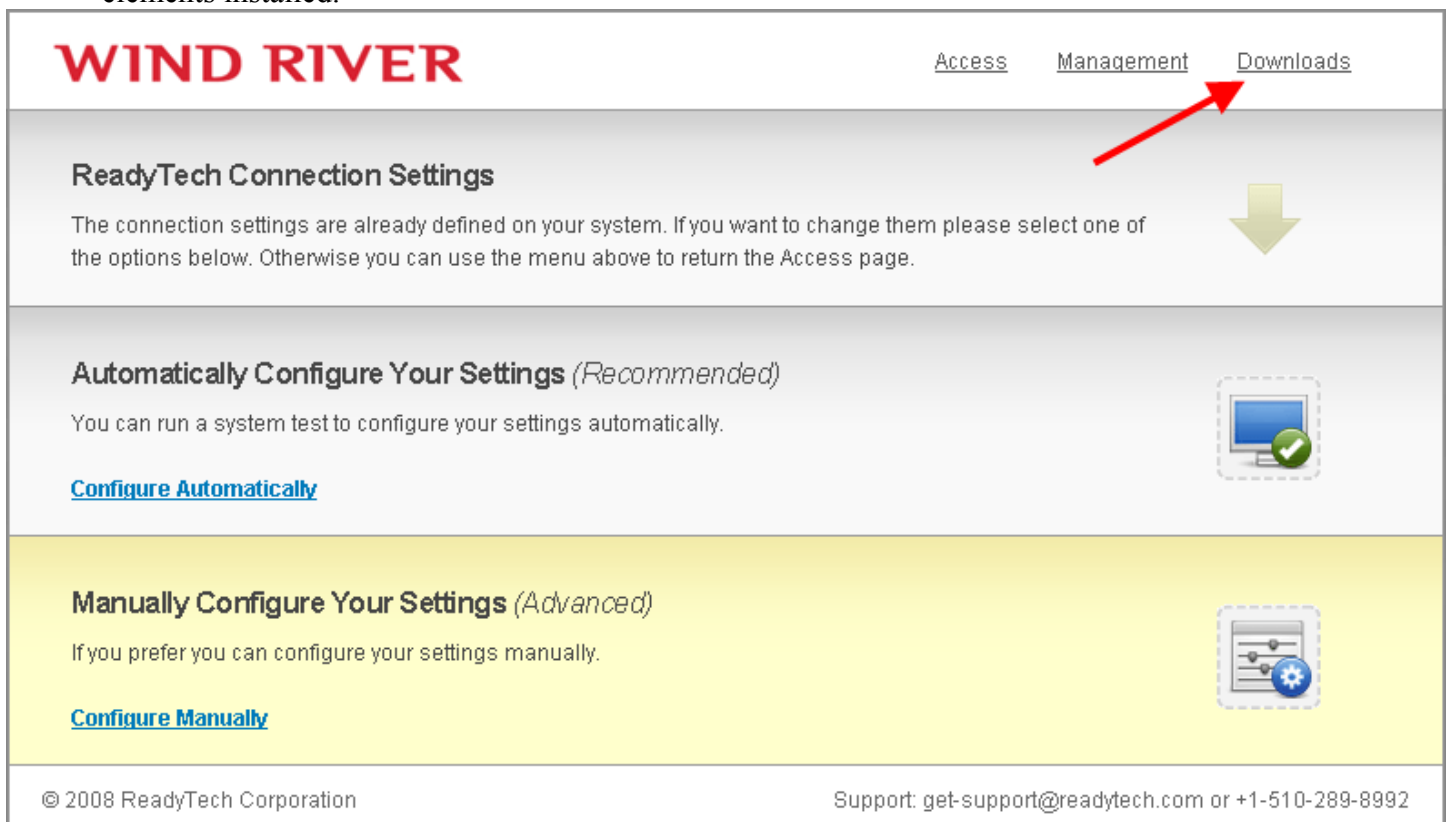
To access your remote system, please enter your access code below:

Access Code:

Note that the access code is typically provided by the instructor the first day of class.

© 2008 ReadyTech Corporation Support: get-support@readytech.com or +1-510-289-8992

2. For students using a browser on a Windows machine, download the pieces that you will need for the connection by clicking on 'Downloads'. For students using a browser on a Linux machine, you will need to check with your system administrator to make sure that you have the appropriate VNC and Java elements installed.



WIND RIVER [Access](#) [Management](#) [Downloads](#)

ReadyTech Connection Settings

The connection settings are already defined on your system. If you want to change them please select one of the options below. Otherwise you can use the menu above to return the Access page.

Automatically Configure Your Settings (Recommended)

You can run a system test to configure your settings automatically.

[Configure Automatically](#)

Manually Configure Your Settings (Advanced)

If you prefer you can configure your settings manually.

[Configure Manually](#)

© 2008 ReadyTech Corporation Support: get-support@readytech.com or +1-510-289-8992

3. For Windows users, download the correct Java version and the VNC Viewer (**place the vncview.exe file on your Desktop!**).

WIND RIVER

[Settings](#) [Access](#) [Management](#)

Download Resources



Microsoft Remote Desktop Client

Microsoft's Remote Desktop client is pre-installed on XP and Windows 2003 systems and installable on most other platforms. It generally offers the best performance on Windows.

We do not support Microsoft Remote Desktop Client in the Virtual Classroom!



[Download VNC](#)

VNC Viewer

The VNC viewer is only required if you are attending a Linux training course or for certain installation courses. If you need VNC, click the icon to download it and **SAVE IT TO YOUR DESKTOP**. You do not need to open or run it. Our software will look for it on the desktop and launch it for you.



[Download Java](#)

Sun Java Platform


The Java connection software requires the Java Plug-in 1.5 or higher. The Java plug-in 1.5 is packaged with the Java Runtime Environment (JRE) 5.0. You can download the 5.0 JRE from here or from Sun's web site. If you need the JRE 6.0 (because you selected the 64-bit Java Applet) please download it from Sun's web site.

4. Click on the 'Settings' link to return to the configuration of your connection.

WIND RIVER

[Settings](#) [Access](#) [Management](#)


Download Resources



Microsoft Remote Desktop Client

Microsoft's Remote Desktop client is pre-installed on XP and Windows 2003 systems and installable on most other platforms. It generally offers the best performance on Windows.


[Download RDP](#)



VNC Viewer

The VNC viewer is only required if you are attending a Linux training course or for certain installation courses. If you need VNC, click the icon to download it and SAVE IT TO YOUR DESKTOP. You do not need to open or run it. Our software will look for it on the desktop and launch it for you.

[Download VNC](#)



Sun Java Platform

The Java connection software requires the Java Plug-in 1.5 or higher. The Java plug-in 1.5 is packaged with the Java Runtime Environment (JRE) 5.0. You can download the 5.0 JRE from here or from Sun's web site. If you need the JRE 6.0 (because you selected the 64-bit Java Applet) please download it from Sun's web site.

[Download Java](#)


5. Click on 'Configure Manually' to set up your browser access.

WIND RIVER

[Access](#) [Management](#) [Downloads](#)

ReadyTech Connection Settings


The connection settings are already defined on your system. If you want to change them please select one of the options below. Otherwise you can use the menu above to return the Access page.



Automatically Configure Your Settings *(Recommended)*


You can run a system test to configure your settings automatically.


[Configure Automatically](#)



Manually Configure Your Settings *(Advanced)*

If you prefer you can configure your settings manually.

[Configure Manually](#) 



© 2008 ReadyTech Corporation Support: get-support@readytech.com or +1-510-289-8992

6. Select 'Software Type' to be 'Java Applet' and 'Viewer Type' to be 'VNC Viewer', and click 'Test Settings'.

WIND RIVER

[Access](#) [Management](#) [Downloads](#)

ReadyTech Connection Settings

The connection settings are already defined on your system. If you want to change them please select one of the options below. Otherwise you can use the menu above to return the Access page.

Automatically Configure Your Settings *(Recommended)*

You can run a system test to configure your settings automatically.

[Configure Automatically](#)

Manually Configure Your Settings *(Advanced)*

If you prefer you can configure your settings manually.

[Configure Manually](#)

Software

Software Type: **1**

Viewer

Viewer Type: **2**

Command:

Proxy

Proxy Type:

Advanced Options

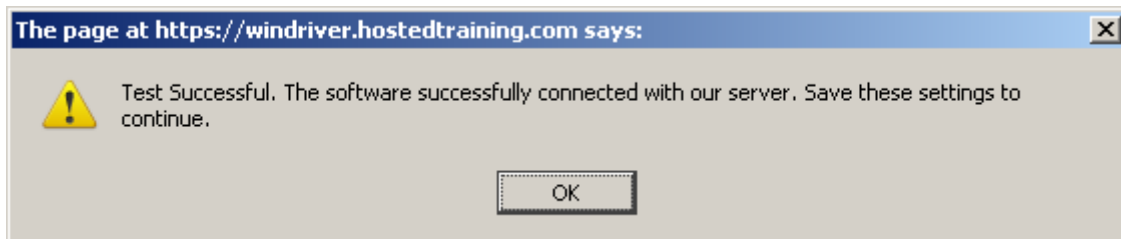
Local IP Binding:

Gateway Port:

[Cancel](#) **3** [Test Settings](#)

© 2008 ReadyTech Corporation Support: get-support@readytech.com or +1-510-289-8992

7. If your settings work correctly with the remote lab gateway, you will see the following results:



8. Click on "Save " to save your configuration.

WIND RIVER

[Access](#) [Management](#) [Downloads](#)

ReadyTech Connection Settings

The connection settings are already defined on your system. If you want to change them please select one of the options below. Otherwise you can use the menu above to return the Access page.

Automatically Configure Your Settings *(Recommended)*

You can run a system test to configure your settings automatically.

[Configure Automatically](#)

Manually Configure Your Settings *(Advanced)*

If you prefer you can configure your settings manually.

[Configure Manually](#)

Software

Software Type:

Viewer

Viewer Type:

Command:

Proxy

Proxy Type:

Advanced Options

Local IP Binding:

Gateway Port:

[Cancel](#) [Test Settings](#)

© 2008 ReadyTech Corporation Support: get-support@readytech.com or +1-510-289-8992